




Icons of Europe

The association Icons of Europe promotes great culture as a platform for dialogue and inspiration of value for industry, international relations and societal issues.

Icons of Europe asbl was founded in  2001 by Cecilia and Jens Jorgensen, and inaugurated under the auspices of the Secretary General of the Council of Europe, Mr Walter Schwimmer.

Act 4, Hope, of *Chopin and The Nightingale* performed by Daniel Blumenthal, piano, and the twin sopranos Biljana Staffansson and Ljiljana Jovanović in Lasne, October 2003



Core activity of Icons of Europe

- Research: Icons of art, music, literature, science
- Classical music events with a theme for VIPs
- IconPortal to countries and Icon publications
- Communication (web, articles, seminars, film)
- Advocacy on the new Europe and TB/HIV issues
- Cooperation with companies and institutions



Celebrating the EU enlargement at Salle Waldorf, Brussels, on 17 November 2002. Thisted Master Chamber Players: Daniel Blumenthal, piano; Craig Goodman, flute; Elisabeth Zeuthen Schneider, violin; and Morten Zeuthen, cello.

The musical events in 2002-2005 were organized under the patronage of the Brussels-based ambassadors of Britain, China, Czech Republic, Denmark, France, Germany, Hungary, Poland, Spain, Sweden and the United States of America, as well as of Europa Nostra and the British High Commissioner to Canada, Ottawa.



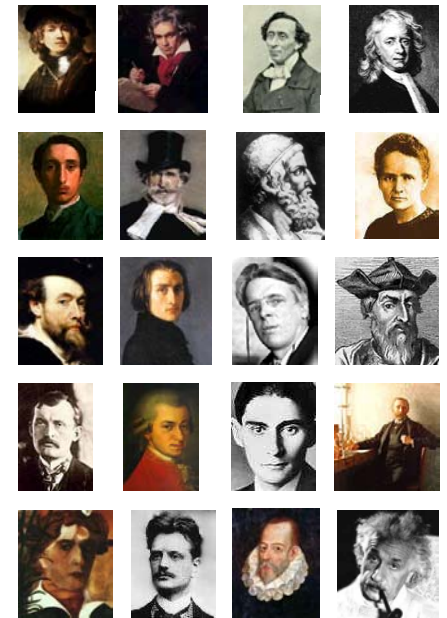
Icons of Europe

Rue Haute 32
B-1380 Lasne (Brussels), Belgium
Tel. +32 2 633 3840
Fax +32 2 633 4445
icons@europe.com
<http://www.iconsofeurope.com>

Logo designed by Galerie Beaumont
Image credits at iconsofeurope.com



Icons of Europe



Art Music Literature Science

THE VALUE OF GREAT CULTURE

MAIN EVENTS 2001-2003



Lasne, 21 September 2002
Inauguration of Icons of Europe
« Beethoven, Debussy, Liszt:
Clin d'œil to Belgium », by Daniel
Blumenthal, professor in piano at
the Royal Conservatory of Brussels.



Brussels, 17 November 2002
Celebrating the EU enlargement.
Music by Bartók, Chopin, Dvořák,
Holmboe, Kodály, Paderewski –
Thisted Master Chamber Players.

Photos under Core activity.



Lasne, 15 March 2003
« Chopin: Three Countries »
by Daniel Blumenthal, piano.

Programme introduction by the
Frederick Chopin Society, Warsaw.



Lasne, 25 and 26 April 2003
Piano recitals by three
Chinese candidates of the
Queen Elisabeth International
Music Competition: Bach,
Beethoven, Chopin, Liszt.



Brussels, August 2003
New biography « CHOPIN
and The Swedish Nightingale »
researched and written by
Cecilia and Jens Jorgensen and
published by Icons of Europe – with
support for the fight against TB.



Lasne, 11 October 2003
Musical drama « Chopin and The
Nightingale » in six acts for piano,
two sopranos and narrator,
celebrating Chopin, Jenny Lind
and Hans Christian Andersen.
Music: Bellini, Chopin, Meyerbeer.

The European Commission ensured in February 2004, at the request of Icons of Europe in 2003, that a € 2-million EU-funded childhood-obesity research project agreed to *withdraw* the inappropriate acronym CHOPIN from all its public activities, a misuse the press had compounded.

PROGRAMME 2004

Expert roundtable at Warsaw, 1 March

Hosted by the Fryderyk Chopin Institute on Chopin's birthday, discussion of the biography and the research paper on Chopin and Jenny Lind at a roundtable with Chopin experts, the media and special guests at Warsaw Philharmonic.



« Chopin and The Nightingale », 6 April



Warsaw premiere at the Swedish Embassy to celebrate the new Europe. The drama documents the actual musical encounters of Chopin and Jenny Lind, seen as a replay of Hans Christian Andersen's story

The Nightingale. The drama ... "ingeniously brings out the seamlessness of great European culture" (the British Ambassador at the premiere).

« A creative friendship », Lasne, 5 June

Dvořák and Brahms by Justus Grimm, first solo cellist at the Royal Opera, Brussels, and Daniel Blumenthal, piano, ... to celebrate the new Europe and CZ / DE / U.S. bonds.



Dialogue with the International Herald Tribune

This global newspaper published several letters by Icons of Europe on EU principles and Europe's cultural heritage. The ambassador of a new EU member country noted on 11 August 2004: "You are really doing an excellent job to promote better understanding of what Europe is all about".



The fight against tuberculosis

In July, Icons of Europe was elected partner of the WHO-hosted global Stop TB Partnership, which provided an incentive to build on earlier TB / Chopin-related initiatives including the Icons of Europe TB/HIV Fund.

Chopin / Jenny Lind research

Additional research was initiated on Chopin's final years and the posthumous 1850-1900 period (e.g. *Punch*, Paris venues, Jane Stirling, and Fr. Niecks).

Sponsors of the 2002-2003 events were Astoria, Banque Privée Edmond de Rothschild, BP, Czech Airlines, Galerie Beaumont, IT Finance, LOT Polish Airlines, Royal Danish Embassy (Brussels), SAS and Telefonica. In 2004, sponsors included LOT, Medcover, Rothschild Europe, and Vattenfall.

PROGRAMME 2005

Roundtable in Scotland,

11 January 2005, with three British musicologists of the Universities of Edinburgh and St. Andrews reviewing a new and expanded research paper on Chopin and Jenny Lind 's relationship. Image: Calder House.



Promoting World TB Day 2005, Toronto, Canada

Performed by The Glenn Gould School of the Royal Conservatory of Music at the Royal Ontario Museum with the support of Toronto Public Health:
Concert, 4 March: "Chopin masterpieces and Nightingale songs" for 600 people (+ TB display).

Premiere of musical drama, 24 April: "Chopin and The Nightingale" for the public and VIPs – patronage by the British High Commissioner to Canada and endorsement by Embassy of Poland in Brussels, Consulate General of Poland in Toronto, Fryderyk Chopin Institute in Warsaw, and Stop TB Canada. Noted by WHO and the Public Health Agency of Canada. Icons of Europe: playwright, pro bono co-producer and sponsor; now developing a strategy for future WTBDs.

Hans Christian Andersen (1805-1875)

The 200-year anniversary of the Danish storyteller on 2 April was celebrated by the Canadian premiere of "Chopin and The Nightingale" in Toronto.

Article in the annual *Chopin in the World* journal

The trail of Mazurka in A flat from Queen Victoria to the sojourn in Canada during WW2 and more.

The need to fight tuberculosis



Tuberculosis (TB) cut short the creativity and life of many Icons including Chopin, Kafka, Keats and Orwell.

Tuberculosis has today re-emerged as a global epidemic that continues to kill about two million people each year. TB is a bacterial infection that usually attacks the lungs. Spread by coughing and sneezing, the disease is curable. However, drug resistance, a TB/HIV interface, migrants and stigma have created a dangerous and complex situation in both low- and high-income countries.